

# INTERIORS

**FOUNTAIN HEAD DESIGN'S  
INNOVATIVE AND UNCONVENTIONAL PROJECTS**



**PLUS**

**Chhand & Madhavi Bhise • Bharat Shetty • Apoorv Singh & Manishi Aggarwal  
Preeti Dhall • Vistasp Bhagwagar • Interics Architects • Narayan Sinha**



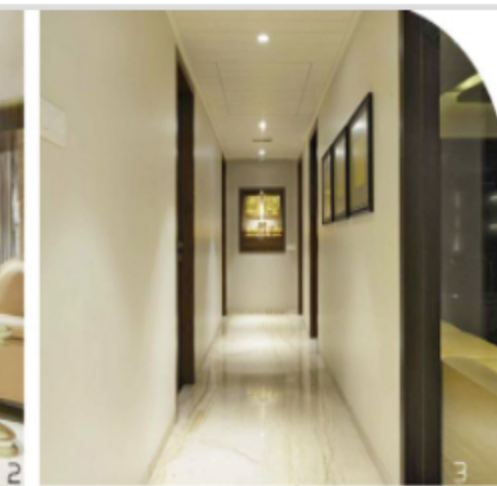
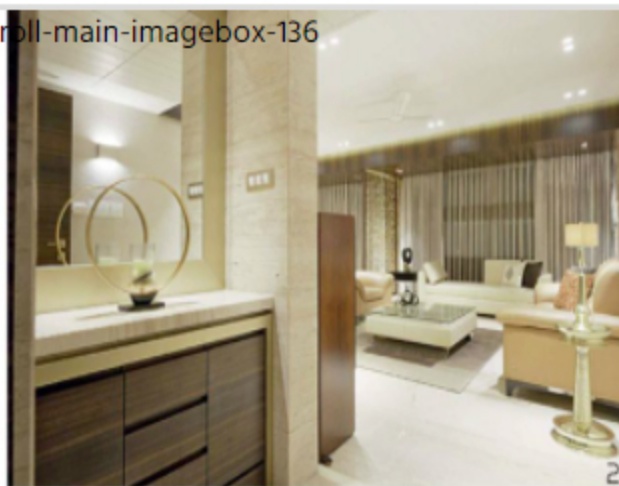
# Contemporary CHIC

AR. BHARAT SHETTY  
DESIGNS A FUNCTIONAL  
YET CHIC APARTMENT  
FOR THE **BALANS** IN  
MUMBAI.

**Text:** Bindu Gopal Rao

**Photographs:** Anand Diwaskar





A modern home is apt for a new-age nuclear family. Functional yet stylish is how you describe **Safish** and **Seema Balan** home in Chembur, Mumbai. Designed by **Ar. Bharat Shetty**, Principal Architect, **Bharat Shetty Architects**, this four bedroom apartment for a family of four is spread over an area of 2,530 sq. ft.

This home has a neutral colour palette that is easy on the eyes. Located on the 12<sup>th</sup> floor, the home offers a panoramic view of the BARC hills from all the rooms, which blend seamlessly with the overall decor of the home.

On entering the apartment, a console and bespoke frame welcomes guests at the entrance lobby. The living room is fragmented into a formal seating area, an informal seating area and a dining area. "The informal and formal seating are visually divided by a metal trellis. The formal living room has white gypsum ceiling and the informal area has a smoke walnut veneer on the ceiling. The full-height windows allow a lot of natural light and the ivory coloured thick curtain and the sheer curtain gives a natural balance and complement the leather furniture around it and the woven flat weave geometric pattern rug, further enhances the formal seating area in the living room.

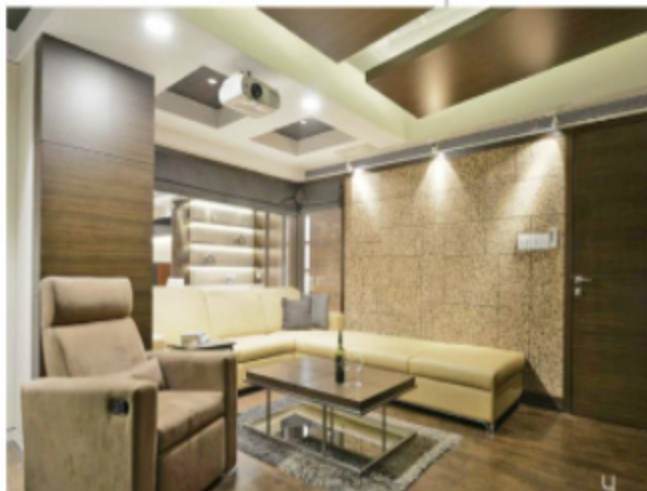
The living room has a beige and brown Breccia Aurora marble flooring with a combination of honed Travertine marble cladding and smoked veneer paneling on the walls.

1 Full view of living room with dining area and a metal trellis dividing the informal seating area.

2 A welcoming console table at the entrance with view of living room.

3 View of the mandir from the passage.

4 L-shaped leather sofa with a cork sheet paneling and a recliner in the media room-cum-entertainment room.



"Beige fabric a tan-leather sofa and off-white leather dining chairs break the monotony of the beige colour scheme but also complements it," explains Ar. Bharat Shetty. All the furniture in this home is customised. Black back painted glass and white Duco paint finish is used on the TV unit and crockery shelves. One of the four bedrooms has been converted into a media room-cum-entertainment den. A common wall between the media room and the living room was broken and replaced with a glass partition, so that the media room looks like an extension of the living room. This feature visually enhances the living room. The living room has ample natural light and leads into a passage connecting the other three bedrooms and at the end of the passage is a tiny quaint Puja room. An amber glass Rose Bud Chandelier lamp by Klove, above the dining table is the focal point of interest and the other table lamps are sourced from around the city.

The media room is designed for multi-purpose uses and has a home theatre, writing table, library and wine chiller. It is a great space for hosting parties, and once the blinds are up it feels like an extension of the living room. The master bedroom on the other hand has earthy colours that define the elegant and simple personality of the client. With a sleeping area, a study a walk-in closet with a dresser and a bathroom with a Jacuzzi, this room has a combination of California walnut-veneer and beige back-painted glass. The bed valance and the headboard are in leather. "The headboard is backed by a linen feel wallpaper. Over the side table is A Sunheri Jhumki pendant lamp, which complements the elegant bedroom. The flooring is engineered wood and the walk-in closet in the master bedroom has white back-painted glass sliding shutter with a full-length mirror on one side for dressing. The master toilet designed using beige Botticino marble is highlighted with metal Oxido tiles. It has a Jacuzzi bathtub and a separate shower area and a vanity counter," says Bharat.

5

The girls room designed in sunshine yellow and shades of grey.

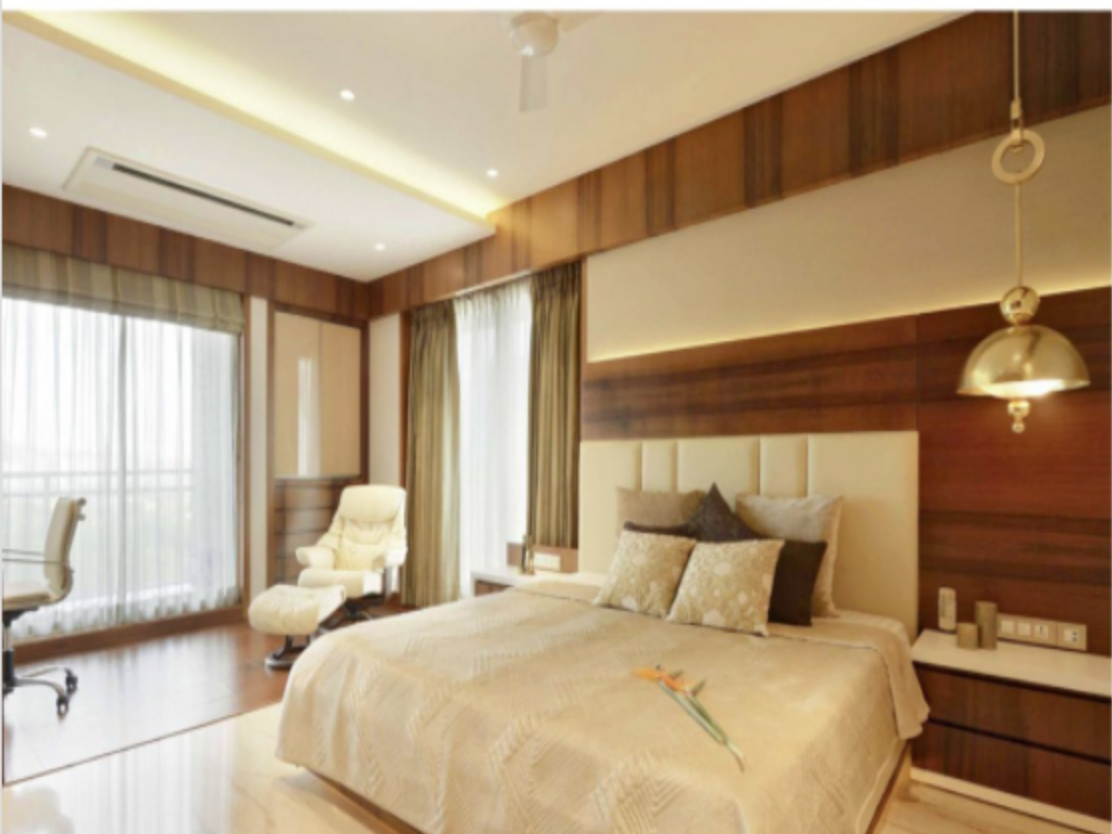
6

The simple no fill guest room.

7

Earthy colours give warmth to the master bedroom.









The daughter's bedroom has a playful colour palette, a small seating and study area have been created for friends to hang out. It also has a walk-in closet leading to the bathroom. "The daughter's bedroom has a combination of light veneer, white corian, grey and sunshine yellow back-painted glass. We have used striped curtain in a combination of grey, yellow, black and white to add a graphical element to the room. The headboard wall has a contrast grey colour accessorised with ceramic floral design, which adds a unique feature to this wall, in contrast to the book cabinet extended to the side table," says Bharat.

The guest bedroom is simple and has a no frill look with a double bed, a small study table and a wardrobe in white ash veneer and white corian notes. "The kitchen is modern, where the flooring in wood finish tiles and the kitchen shutters in high gloss white with a tang coloured toughed glass dado was fabricated," says Bharat.

The general lighting across this home is all dimmable LEDs and the entire house is automation. The house is centrally air conditioned with a VRV system. "The client had given us a free-hand at designing this space and we successfully achieved what the client wanted which is a warm, cosy, homely house rather than a plush residence. Although the biggest challenge, we faced was carving out functional spaces out of a cookie cutter, typical builder's plan that we see in most apartments in Mumbai. Within a limited space, we carved-out a walk-in closet in two bedrooms and added a Jacuzzi to the master bathroom. We managed to maximize the space and feel of living room by adding a media room as an extension to the living room. These were challenges, but they also made the design special and unique," recalls Bharat. The end result however is a home that is perfect for its owners. ■

8

A champagne colour blown glass light fitting complements the dining area.

9

For the kitchen wood finish floor tiles complements high-gloss shutters with a tang colour toughened glass dado.

10

Dressing area of the master bedroom in the walk-in closet.



## AR. BHARAT SHETTY

Bharat Shetty Architects & Interior Designers started in 1994 and focuses on both architecture and interior designing. The company has a strong hotel and restaurant portfolio and is increasing its exposure in office and commercial spaces and high-end residential projects.

BHARAT SHETTY ARCHITECTS & INTERIOR DESIGNERS

421, Sai Commercial Building  
8KS Devshi Marg  
Govandi  
Mumbai 400 088  
022- 67978108  
info@bharatshetty.com